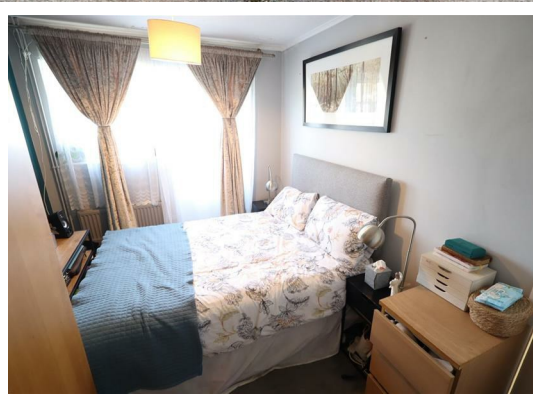


Royal Court
Hemel Hempstead HP3 9QP
£1,350

- Two bedrooms
- Balcony
- Modern bathroom
- Open plan kitchen
- Private car park
- Quiet cul-de-sac
- Available from 18/10/2025
- Council Tax Band B
- EPC - C
- Holding Deposit £311



67 Marlowes
Hemel Hempstead
Hertfordshire
HP1 1LE

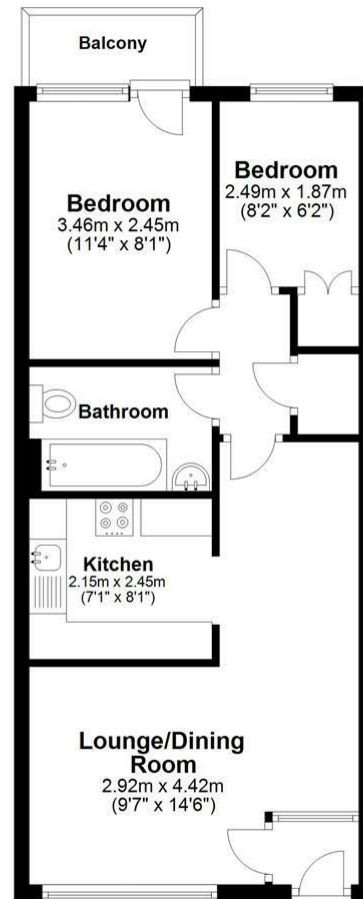
01442 233533

homes@squireestates.co.uk

squireestates.co.uk

Floor Plan

Approx. 46.5 sq. metres (500.3 sq. feet)



Total area: approx. 46.5 sq. metres (500.3 sq. feet)

Disclaimer - Floor plan is for marketing purposes only and is to be used as a guide - SKM Studio
Plan produced using PlanUp.